

[312_{v4}] Rigid Lock+ 30 / 55

CONDITIONS

SUBSTRATES

ACCESSORIES

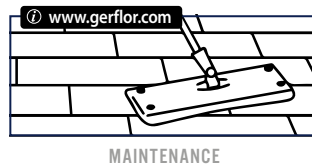
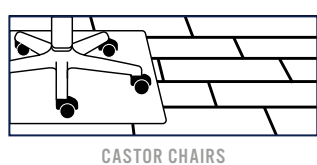
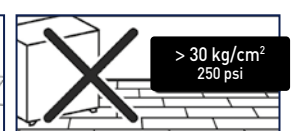
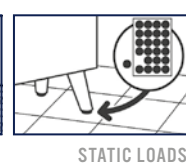
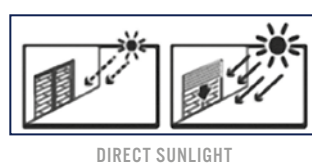
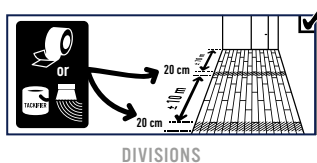
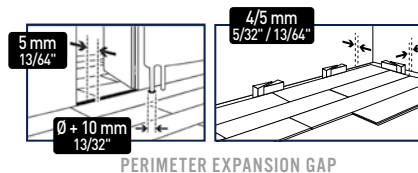
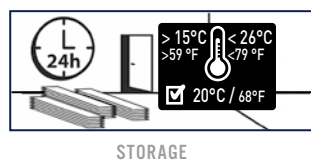
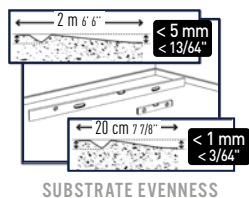
INSTALLATION

LAYING CONDITIONS

SUBSTRATE EVENNESS	Flatness requirement: < 5 mm/2 metre ruler or < 1 mm/20 cm ruler	Flat, clean, sound, dry and solid substrate.
STORAGE	At least 24 hours before laying	Store the floor covering in the room in which it is going to be laid.
LAYING TEMPERATURE	15°C < T < 26°C	Ideally 20°C.
PERIMETER EXPANSION GAP	4 to 5 mm	Around the edges of the room, fixed objects and door thresholds. The gap must be covered by a finishing profile. Wet rooms (e.g. bathrooms): MS Polymer or PU sealant under the finishing profile.
DIVISIONS	Every 10 linear metres or surface area > 150 m ²	Each closed room or premises must be considered separately. Divide the tiles/planks lengthwise by applying an adhesive (such as Gerflor Fix & Free 100) or a gap covered with a ROMUS finishing profile.
DIRECT SUNLIGHT (SUNNY AREAS, BAY WINDOWS, SKYLIGHTS, SKYDOMES, ETC.)	Floor temperature < 60°C	Loose laying is allowed as long as the ambient temperature is regulated. In order to prevent the floor temperature from reaching excessive values up to 60°C or above, direct sunlight on the floor should be obscured by curtains, blinds or other suitable protection. Otherwise, maintain the floor covering in place with a suitable adhesive (please contact the adhesive manufacturer).
VERANDA / CONSERVATORY	Prohibited	Prohibited, whatever the substrate.
FIRST USE	Immediately after installation	

USAGE CONDITIONS

USAGE TEMPERATURE	10°C < T < 30°C	
STATIC LOADS	< 30 kg/cm ² and < 200 kg/support	Do not use rubber end caps. Use flat (not tapered) end caps without any pattern that are suitable for PVC. Use end caps on furniture legs.
CASTOR CHAIRS	PVC-compatible castors according to EN 12529	Recommendation: protective mat beneath castor chairs.

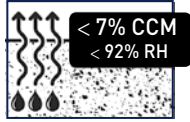
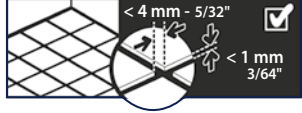


IMPORTANT : The information in this document is valid from: 13/11/2023 and is subject to change without notice. As we carry out continuous technical improvements, our customers should check with us that this document is still in force before starting any work.

Gerflor

[312_{v4}] Rigid Lock+ 30 / 55

CONDITIONS	SUBSTRATES	ACCESSORIES	INSTALLATION
------------	-------------------	-------------	--------------

SUBSTRATE	CONDITIONS
For installing this floor covering	
Concrete floor, painted concrete, levelling compound, cement based screed, anhydrite (calcium sulphate)-based screed	<p>✓</p> <p>Cement: < 7% CCM, 92% RH – Anhydrite-based substrate: < 1%. If necessary, prepare the substrate and apply a smoothing compound to remove any surface irregularities.</p> 
Ceramic tiles	<p>✓</p> <p>If tile joints < 4 mm wide and < 1 mm deep, and no unevenness. Otherwise, apply a grouting product or levelling compound.</p> 
Glued compact PVC / rubber / linoleum floorings	<p>✓</p> <p>After examination and repair depending on the condition of the floor covering. If more than 10% is in bad condition, complete removal is necessary followed by new substrate preparation.</p>
Foam backed PVC floorings	<p>!</p> <p>Not recommended.</p>
Textile floor covering (carpet) / textile-backing PVC floorings	<p>✗</p> <p>Prohibited.</p>
Vinyl asbestos tiles	<p>✓</p> <p>Refer to Gerflor's technical guide for overlaying asbestos floors.</p>
Acoustic underlayers	<p>!</p> <p>Only Gerflor Silence Plus 19 dB (residential premises classified max CEN 23). Refer to the corresponding installation guidelines.</p>
Glued parquet / laminated floor / floating parquet or wood based panels	<p>✗</p> <p>Prohibited (complete removal).</p>
OSB	<p>!</p> <p>Apply a fiber-reinforced levelling compound after treatment of any unevenness and joints between panels.</p>
Wood-based panel flooring on joists or battens / parquet nailed on battens ventilated underneath	<p>✓</p> <p>After treatment of any possible defects on the substrate (unevenness, open joints between planks or panels).</p>
Reversible underfloor heating	<p>✓</p> <p>Allowed.</p>
Underfloor heating with circulating water, max 28°C	<p>✓</p> <p>Allowed.</p>
Radiant electric underfloor heating	<p>!</p> <p>Gluing mandatory.</p>

The preparation of the substrate must comply with the current relevant standards in the country of use. For any information on product properties and usages, please refer to its technical datasheet: www.gerflor.com.

[312_{v4}] Rigid Lock+ 30 / 55

CONDITIONS

SUBSTRATES

ACCESSORIES

INSTALLATION

TOOLS	Utility knife - Tape measure - Metal ruler - Non-rebound mallet- Romus ref. 94964 - Pull bar - Tapping block Mitre shears - ROMUS ref. 93401 / JANSER ref. 237,530,000
ADHESIVES FOR SUNNY AREAS	Refer to adhesive manufacturers recommendations
DIVISIONS	FIX&FREE 100 and ROMUS accessories
UNDERLAYER	Gerflor Silence Plus 19 dB – Ref.: 59490001 – See Installation Guidelines [331]
FINISHES	Design skirting ref. 6086 / MDF design skirting ref. 5947 - See installation guidelines [504A] and [504B]. Door threshold: refer to the Romus catalogue. Wet rooms (e.g. bathrooms) : MS Polymer or PU sealant.

[312_{v4}] Rigid Lock+ 30 / 55

CONDITIONS

SUBSTRATES

ACCESSORIES

INSTALLATION



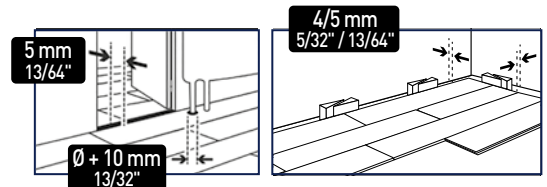
The floor covering should be examined prior to installation for any visible defects. The flooring must belong to the same production batch. If there are any visible defects, please notify GERFLOR and do not begin installation without its prior approval.

LAYOUT

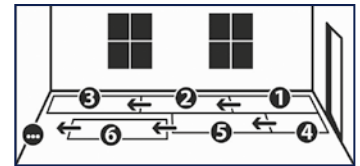
- Mix the planks / tiles from several boxes from the same series.

- The planks / tiles must be oriented in the direction of light or in the direction of traffic.

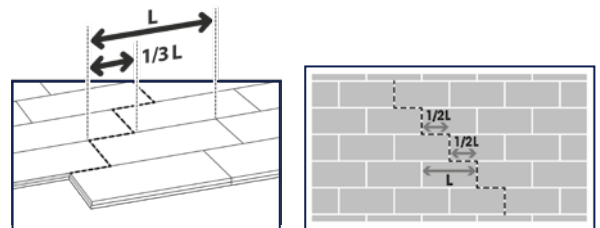
- Perimeter expansion gap : 4 to 5 mm. At room edges, fixed objects and door thresholds. The gap must be covered by a finishing profile. Wet rooms (e.g. bathrooms): MS Polymer or PU sealant under the finishing profile.



- Start laying the planks/tiles in a corner of the room. Move backwards as you lay, with the groove facing towards you

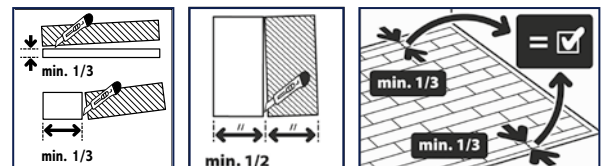


- Offset each row ideally by one third of a plank length, or lay them with «hidden joints». In this case, offset the planks by at least 25 cm, and start the next row with the offcut from the last plank of the previous row. Avoid small cuts at the end of the rows.

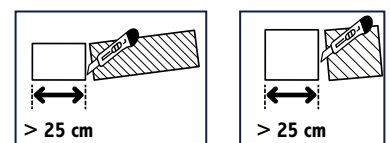


Lay the tiles in staggered joint (offset by half a tile).

- In standard sections, the width of the planks/tiles must be > 1/3 plank or 1/2 tile.



- At the end of the rows, the length of planks/tiles must be > 25 cm, particularly at the entrances and doorways.



[312_{v4}] Rigid Lock+ 30 / 55

CONDITIONS

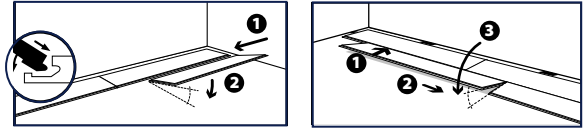
SUBSTRATES

ACCESSORIES

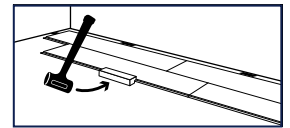
INSTALLATION

INTERLOCKING AND CUTTING OUT

- Start assembling the long edge inserting the tongue into the groove at a slight angle. Move the plank towards the previously installed one, carefully position the tongue over the groove, and assemble the short edges together. Use a non-rebound mallet if necessary



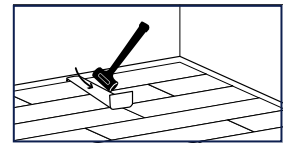
- Finish the interlocking with a tapping block and non-rebound mallet.



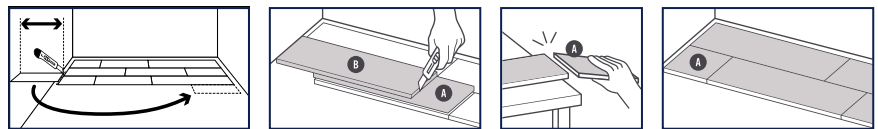
- Make sure that there is no unevenness between planks/tiles.

Incorrect interlocking may lead to imperfect alignment, gaps between tiles/planks, or clic breakage. If necessary, re-adjust the alignment using a tapping block and a plastic hammer.

- To assemble the last row, use a pull bar and a non-rebound mallet.



- Peripheral cutting using the overlapping method. Offcuts can be re-used at the beginning of a row.



- Cutting at the base of the door frames.

Use high leverage mitre shears. ROMUS ref: 93401 / JANSER ref: 237 530 000.

